

HOTEL LA FARANDOLE
SANARY-SUR-MER, COTE D'AZUR, FRANCE

Jeremy Dugroux

САША ЛУКИЧ, УПРАВЛЯЮЩИЙ ПАРТНЕР «PORTNER ARCHITECTS»



A harbor scene at dusk. In the background, a town with a prominent church spire is visible. The foreground shows several boats docked in the water, with their reflections on the calm surface. The sky is a deep blue, and the overall atmosphere is serene and quiet.

КОНТЕКСТ & LIFESTYLE





PETITS DEJEUNERS

CHEZ DOP

BAR DE LA MARINE

GLACIER. COCKTAILS

LE FRANCE

BAR BRASSERIE GLACIER

Concours
Savon Frais 5
Bûche de Noël 5
Fondue
Tarte au Chocolat
Tarte au Caramel
Kéfir, Chocolat
Garniture 6
Saufon
Tortue Omelette

CAFE LIAU

HOTEL





Google

Map data ©2016 Google, Terra



An aerial photograph of a building with a red-tiled roof and a crane in the background. The building is white with some graffiti on the facade. The crane is yellow and is positioned over the building. The background shows a coastal town with a blue sea and hills.

ПРИОБРЕТЕННОЕ **ИМУЩЕСТВО**





Handwritten graffiti in black ink, possibly the word "KAW", on the upper facade of the building.

Green graffiti on the upper facade of the building, possibly the word "KAW".





↓
R
H

ART

ART





STREET

ELIEN
⊕
FREN
RIP

R-207
DASHLEY

OL
Two's





Handwritten graffiti on the white wall, possibly including the number '1572'.





АРХИТЕКТУРНЫЙ КОНТЕКСТ **ПРОВАНСА**



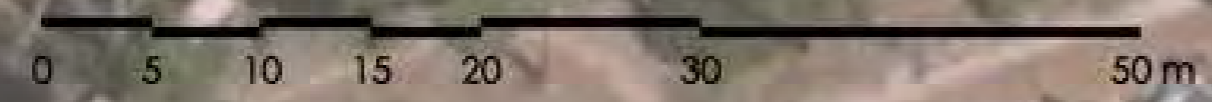




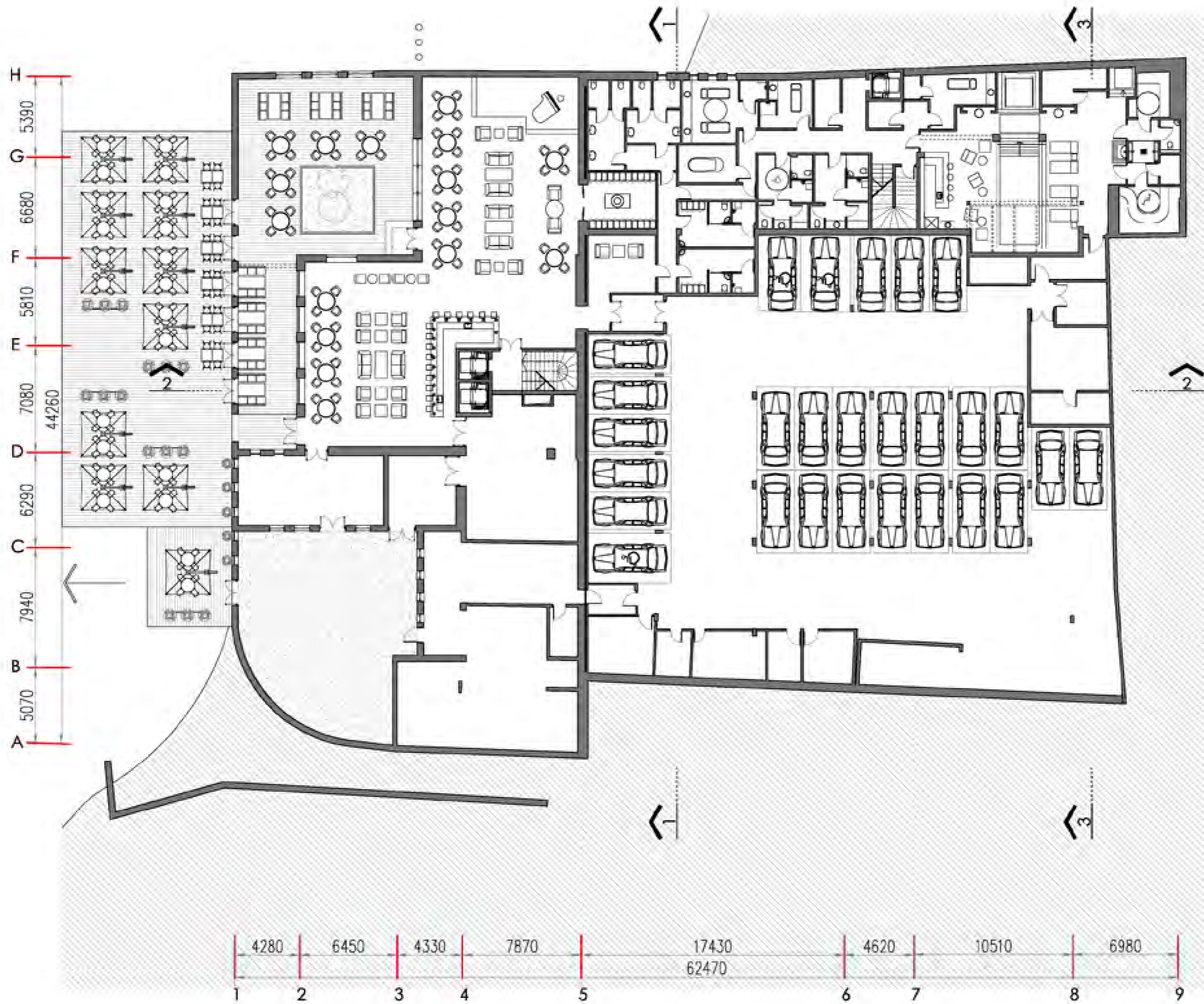


A photograph of a modern building at night. The building has a textured, stone-like facade and a grid of windows, many of which are illuminated from within, casting a warm yellow glow. In the foreground, there is an outdoor courtyard with several lounge chairs and closed patio umbrellas. To the right, a glass-walled structure is visible. In the bottom half of the image, a pool of water reflects the building and the courtyard scene. The word "АРХИТЕКТУРА" is overlaid in the center of the image.

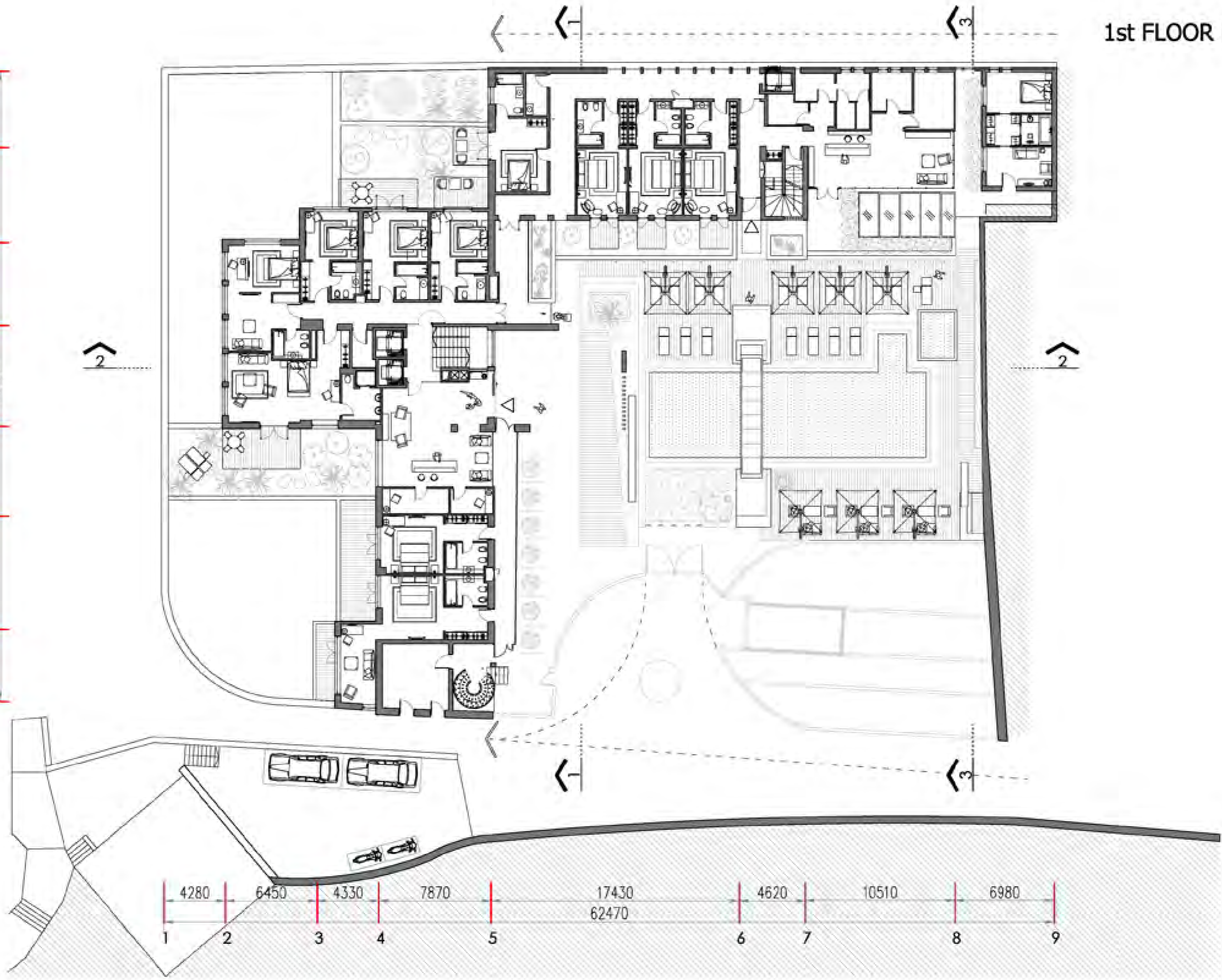
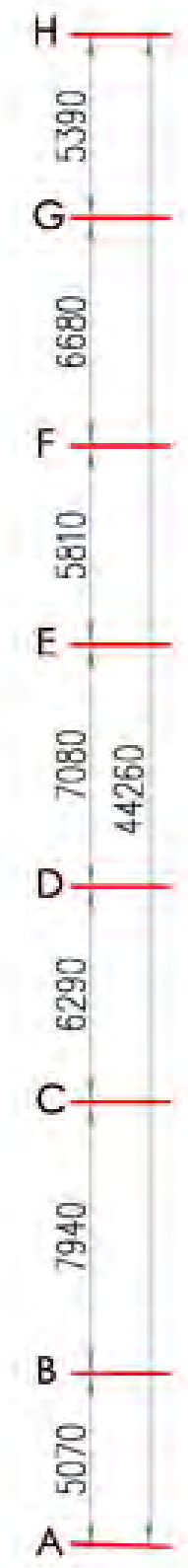
АРХИТЕКТУРА



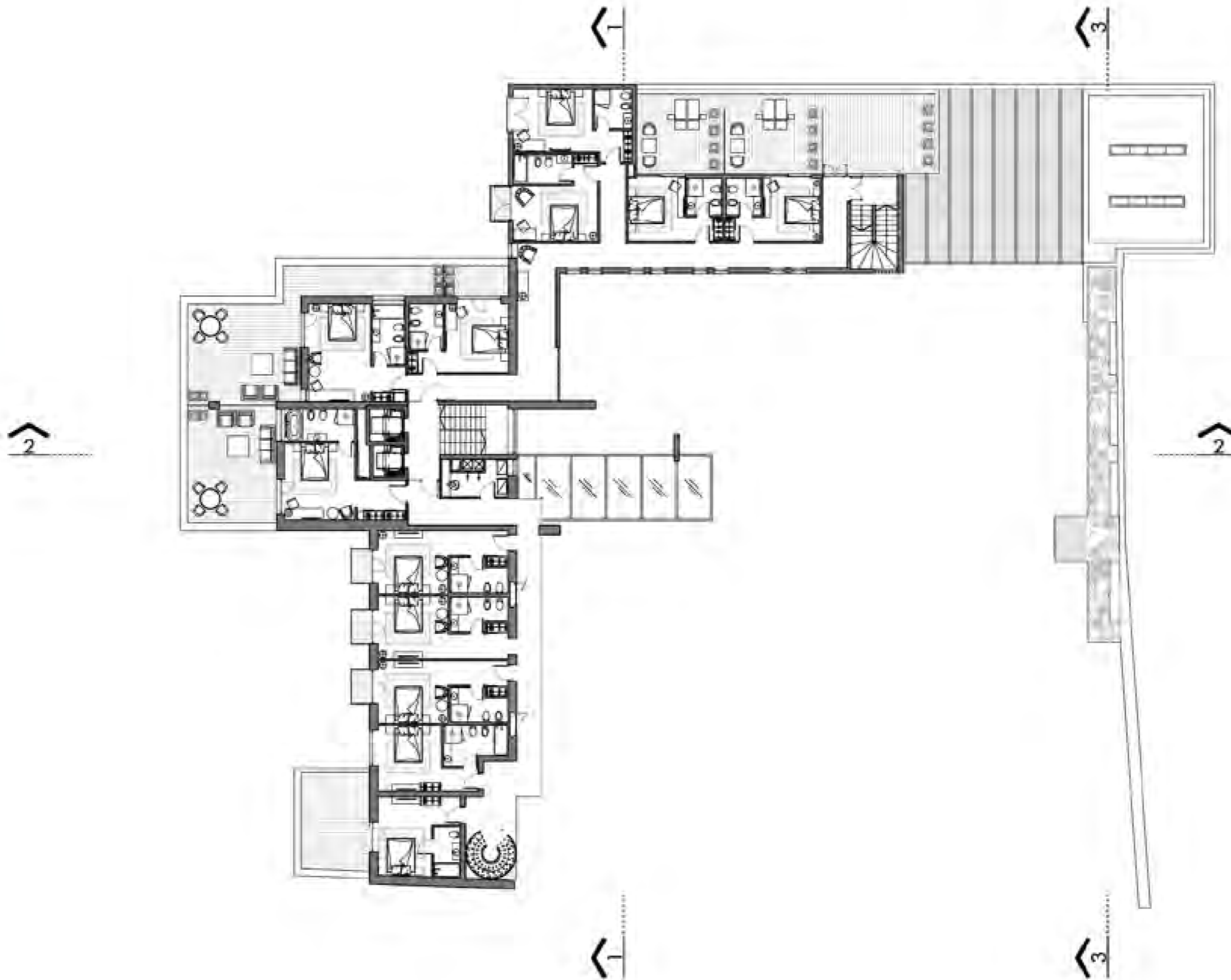
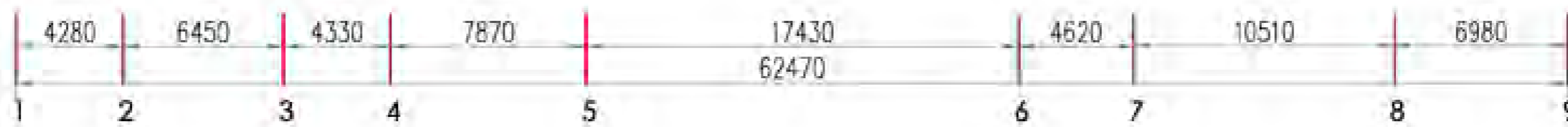
GROUND FLOOR PLAN



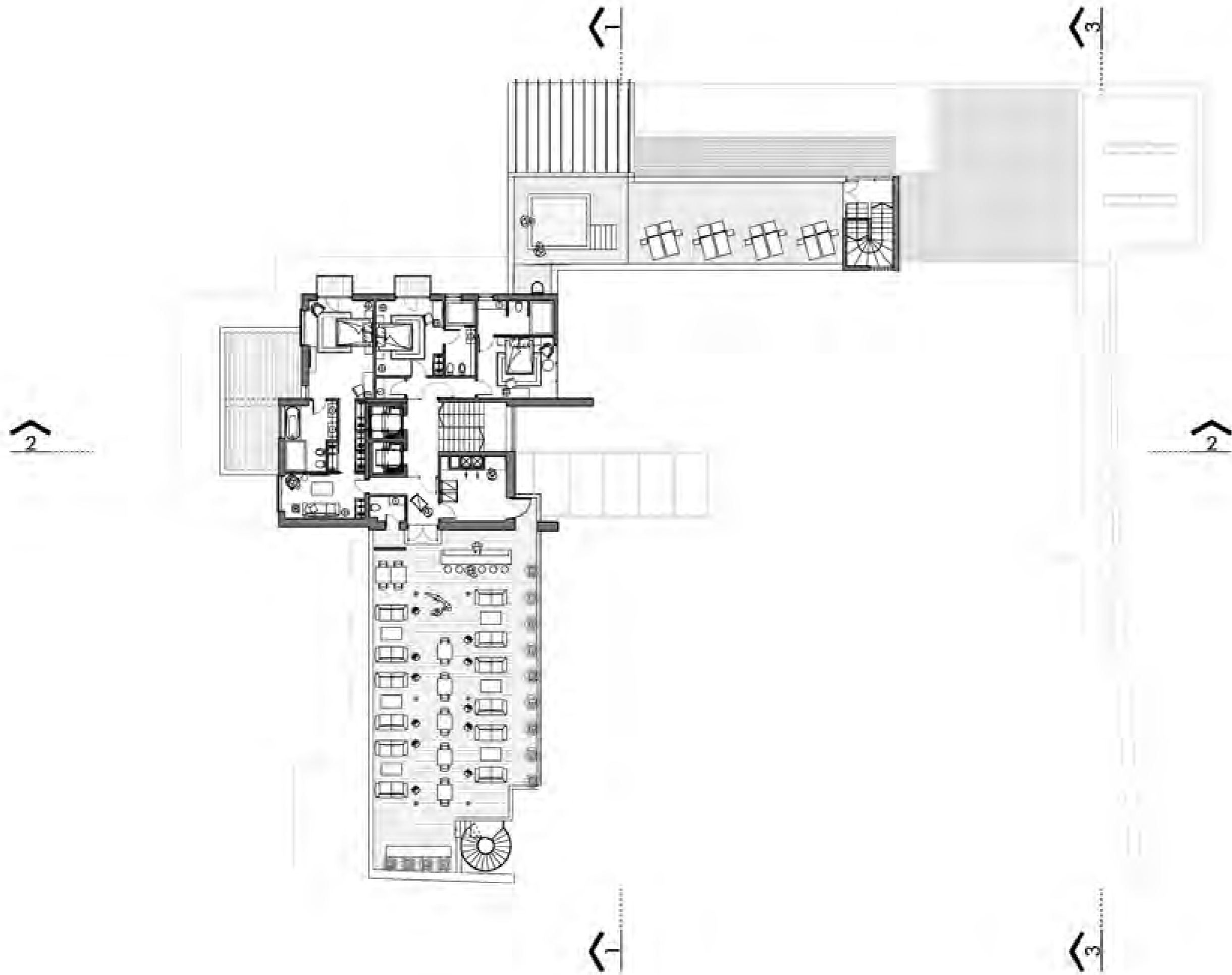
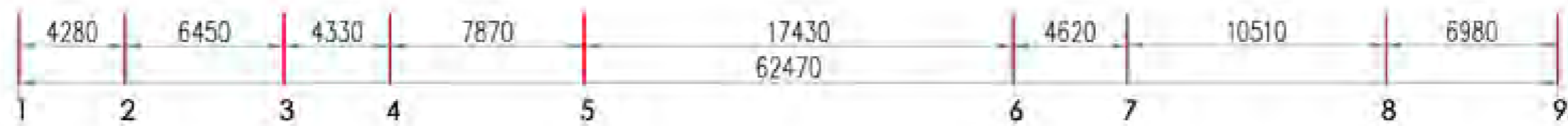
1st FLOOR PLAN



2nd FLOOR PLAN



3rd FLOOR PLAN





ЭКОНОМИКА ПРОЕКТА

ПЛОЩАДЬ УЧАСТКА:	2700 КВ.М
ПЯТНО ЗАСТРОЙКИ:	870 КВ.М
ПЛОЩАДЬ ЗДАНИЯ — БЫЛО :	1450 КВ.М
ПЛОЩАДЬ ЗДАНИЯ — СТАЛО :	3750 КВ.М
НОМЕРОВ И СЮТОВ:	26
ПЛОЩАДЬ РЕСТОРАНОВ:	770 + 400 КВ.М
ПЛОЩАДЬ СПА:	330 КВ.М
П/М НА ПОДЗЕМНОЙ / НАЗЕМНОЙ ПАРКОВКЕ :	27 / 5
БЮДЖЕТ ПРОЕКТА:	2 + 12 МИЛЛИОНОВ ЕВРО
СРОК РЕАЛИЗАЦИИ:	2009-2011 (30 МЕСЯЦЕВ)















La farandole...
HOTELLERIE



















LIFESTYLE



EVENTS



LE CHEF MOURAD HADDOUCHE



Le Jardin
SPA
TISANERIE

TERRAKE SPA



TERRAKE SPA



www.portner.ru